

Electric Vehicles



CONSERVE & \$AVE®



www.rpu.org

EV CHARGING STATION

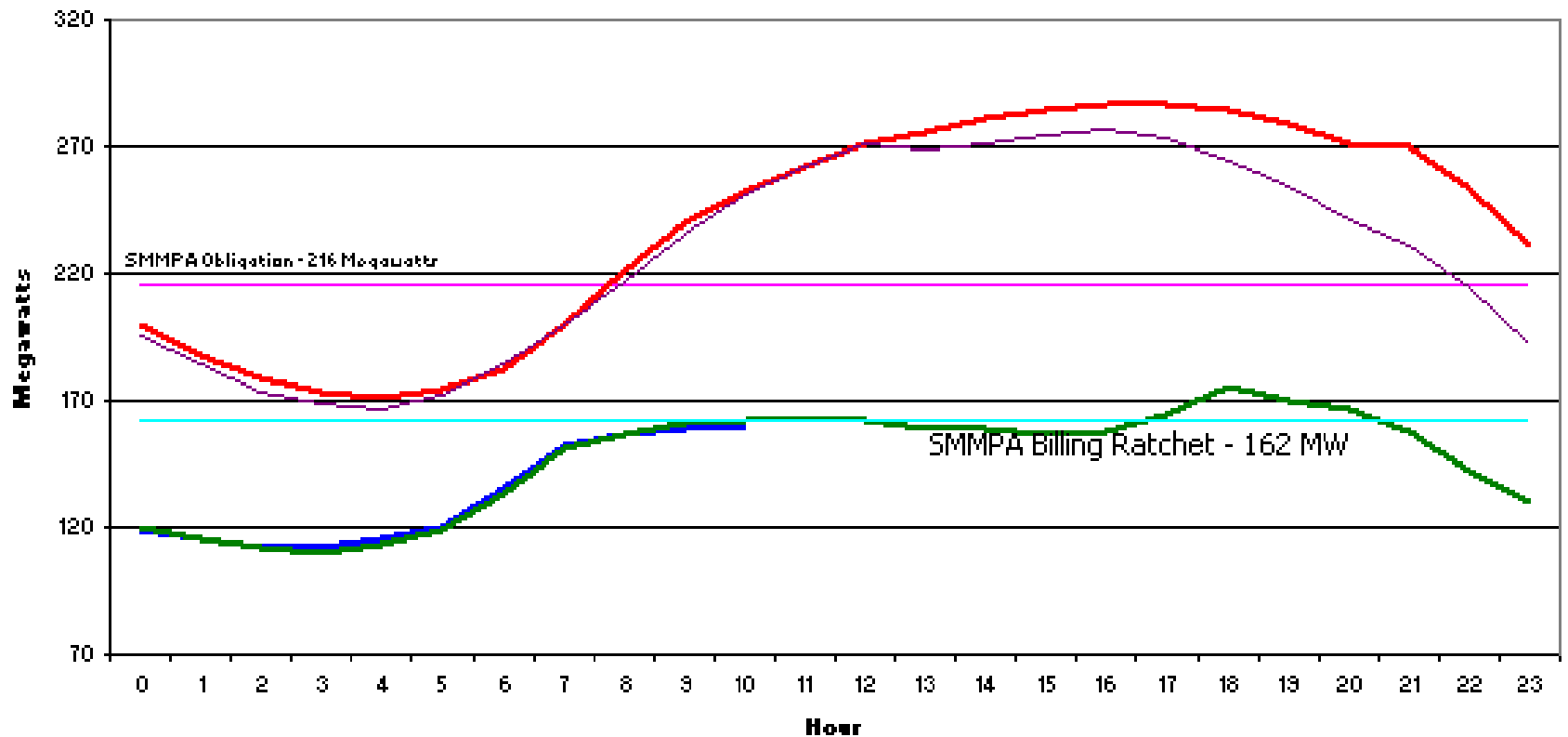


Location: 1st Street Parking Ramp (west of Library)

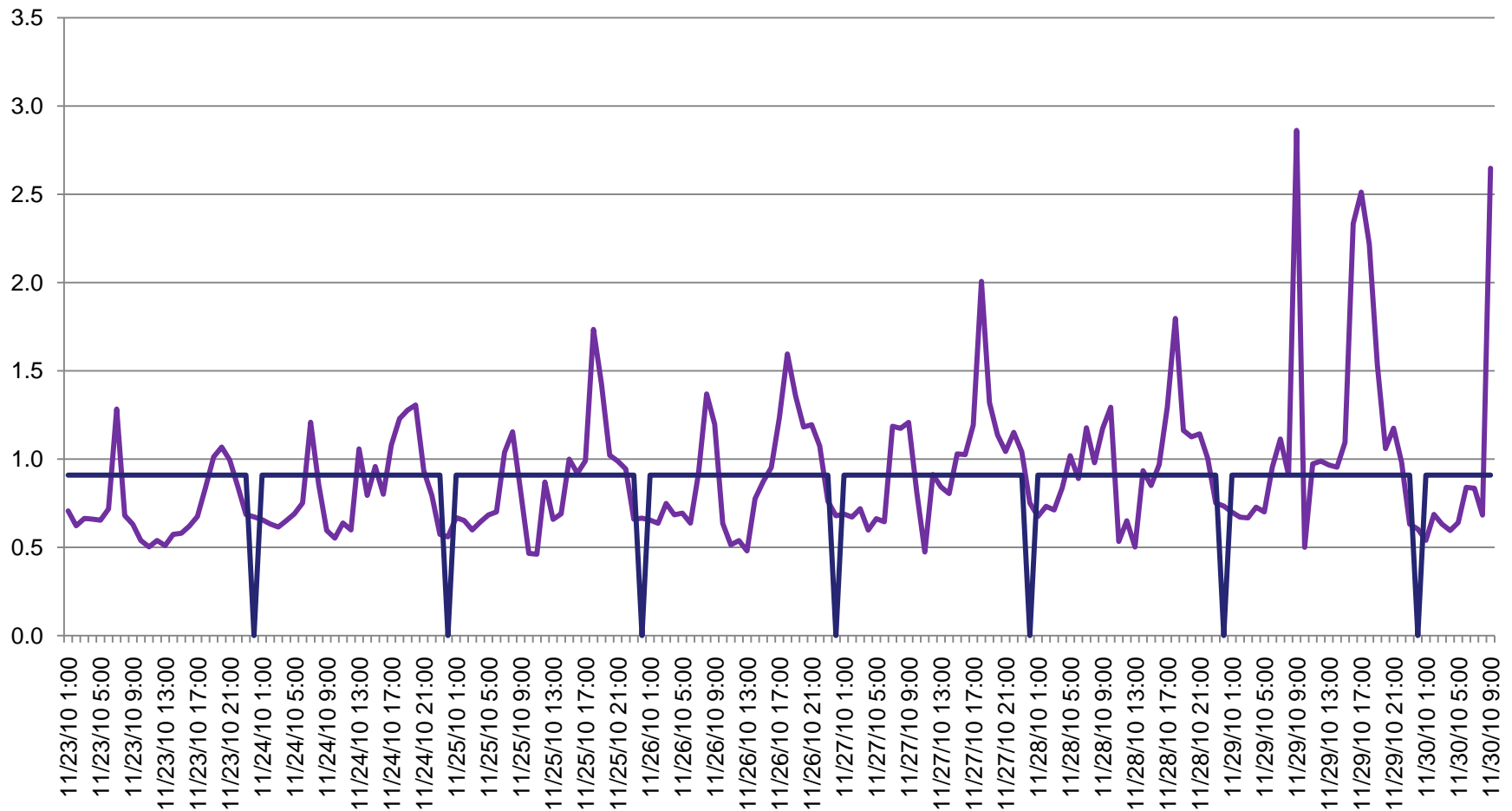
Brand: ChargePoint

System Load Profile

Key: 1/26/11 1/25/11 216 162 7/31/06 - 286 7/17/06



Residential Load Profile





Load Factor


LOAD FACTOR:

- A value expressed in percent of the TOTAL kWh in the metering period divided by the potential TOTAL kWh based on the monthly 15-min demand peak



RPU Annual Load Factor

- System peaked on August 12, 2010 during the 4p-5p hour
- System “peaked” at 278,319kW
- Annual sales of 1,238,772,569kWh
- 50.8% Annual Load Factor



Where Is RPU Headed With “Smart Grid”?

Recognizing the potential of adopting more Smart Grid capabilities RPU developed the following Smart Grid vision statement:

“RPU will prudently adopt Smart Grid technologies which provide customer value in reliability and service.”



Steps To A Smart Grid Future

- Educate Customers
 - RPU will provide more education and outreach programs that inform customers about the cost costs to provide electrical service
- Expand Existing Services
 - RPU has the potential to expand the services and choices already offered by implementing technologies such as smart meters so customers can obtain detailed information on their electrical use



Steps To A Smart Grid Future

- Further Improve Reliability
 - Monitoring system power through smart devices and adding remote control to existing devices could further improve system reliability
- Prepare For Data Management
 - Prior to field installation of smart devices, RPU needs to consider the impacts and how to manage, store, and secure greater amounts of data and information