



# Metro CERTs Network

## Welcome to the Metro CERTs Network Kick-off

**April 15, 2008**

Diana McKeown  
Metro CERTs Network Coordinator  
Green Institute

[dmckeown@greeninstitute.org](mailto:dmckeown@greeninstitute.org)

612-278-7125

[www.cleanenergyresourceteams.org](http://www.cleanenergyresourceteams.org)

**Metro CERTs Network**

**Green Institute**

# Presentation Overview

- CERTs background
- 2007 legislation
- Green Institute Role & background
- Metro CERTs vision, structure & goals
- Become a Metro CERTs affiliate

# Clean Energy Resource Teams

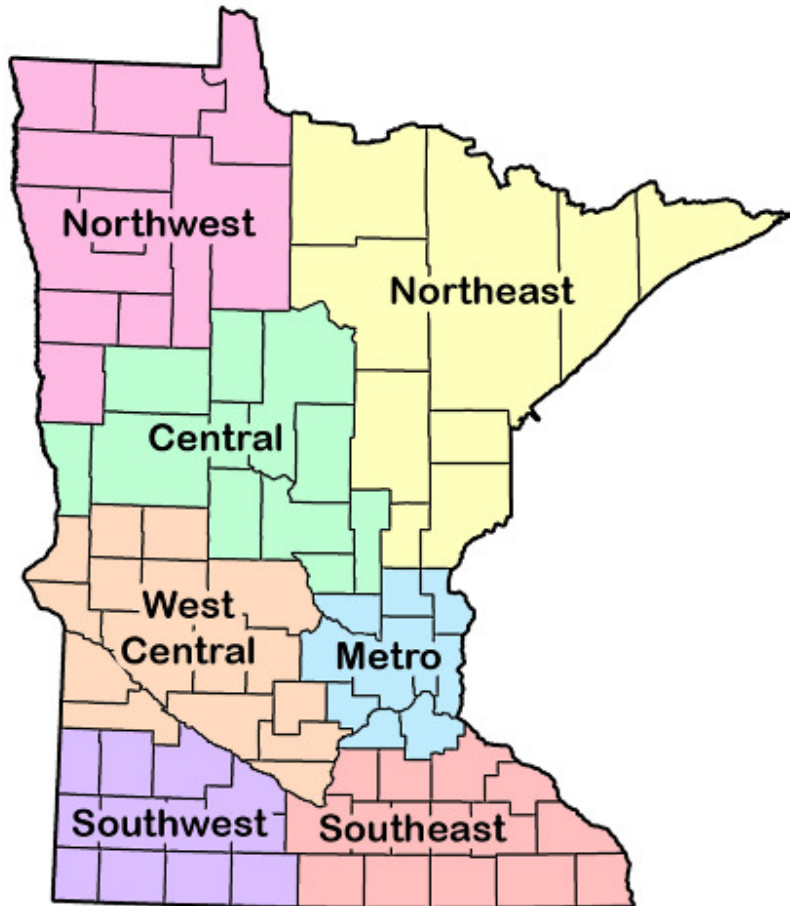
- **University:** U of M  
Regional Sustainable  
Development  
Partnerships
- **Nonprofit:** The  
Minnesota Project &  
Green Institute
- **Government:** MN Dept.  
of Commerce, SW  
Regional Development  
Commission



**Metro CERTs Network**

**Green Institute**

# CERTs Mission & Regions



**Metro CERTs Network**

Give *citizens* a voice in energy planning by connecting them with the *technical resources* necessary to identify and implement *community-scale energy efficiency and renewable energy projects*.

**Green Institute**

# 2007 Energy Legislation

- Renewable Energy Standard: 25% by 2025
- Energy Conservation performance target for utilities --- 1.5% per year
- Climate Change Action Bill
- No new coal plants

But... policy alone not sufficient... local action is necessary to achieve policy goals

- Implementation will require input from communities
- Find opportunities for renewable energy development
- Local involvement and education is necessary to implement conservation... broad changes are necessary

# Background on Green Institute

- Founded in 1993 out of an environmental justice movement against the expansion of a waste transfer station.
- Mission is to “sustain the environment and our communities through practical innovation”
- Solutions-oriented approach
- About 30 employees
- Programs include:
  - Green Buildings
  - ReUse Center/Deconstruction Services
  - GardenWorks
  - Community Energy

**Metro CERTs Network**

**Green Institute**

# Phillips Eco-Enterprise Center



**Metro CERTs Network**

**Green Institute**



# The ReUse Center

## Quality Reclaimed Building Materials



- 10 years operating experience
- Sell 5,000 tons/year of materials that would otherwise be landfilled
- Also sell Forest Stewardship Council (FSC) Certified wood, through partnership with Aiken County.
- Opened Osseo store in 2006; Maplewood store in March 2008



**Metro CERTs Network**

**Green Institute**

# DeConstruction Services



**Metro CERTs Network**



**Green Institute**

# Network of Community Gardens



**Metro CERTs Network**

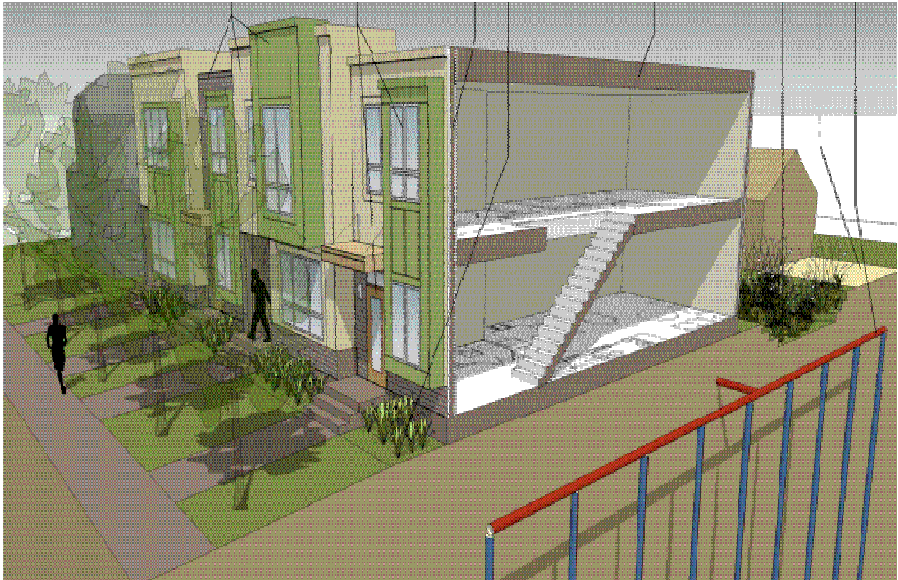


**Green Institute**

# Incubated MN GreenStar Program

MIN GreenStar Remodeling Checklist PLEASE VERSION 01.01.2007		SUMMARY VIEW		SHOW ISSUES							
PROJECT NAME:		PROJECT FIRM:		DATE SUBMITTED:							
UNITS	SCORE	NO. ISSUES	DESCRIPTION	POWER CATEGORIES	COMMENTS	ISSUES OCCURRENCE	ISSUES SEVERITY	ISSUES STATUS	ISSUES COMMENTS	ISSUES DATE	ISSUES COMMENTS
<b>0 INDOOR AIR QUALITY</b>											
<b>01 OVERALL REQUIREMENTS</b>											
<b>01-1 Prerequisites</b>											
Y	01-1-1		Register with MN remodeling								
Y	01-1-2		Submit two years' worth of utility bills to MN remodeling								
Y	01-1-3		Identify areas on register indicating areas requiring full or partial remodel								
Y	01-1-4		Identify areas on register indicating areas requiring full or partial remodel								
Y	01-1-5		Identify areas on register indicating areas requiring full or partial remodel								
Y	01-1-6		Identify areas on register indicating areas requiring full or partial remodel								
Y	01-1-7		Identify areas on register indicating areas requiring full or partial remodel								
Y	01-1-8		Identify areas on register indicating areas requiring full or partial remodel								
Y	01-1-9		Identify areas on register indicating areas requiring full or partial remodel								
Y	01-1-10		Identify areas on register indicating areas requiring full or partial remodel								
Y	01-1-11		Identify areas on register indicating areas requiring full or partial remodel								
<b>1 OUTDOOR AIR AND SITE</b>											
<b>1-1 Prerequisites</b>											
Y	1-1-1		Site plan that considers outdoor air quality								
Y	1-1-2		Site plan that considers solar orientation								
Y	1-1-3		Site plan that considers solar orientation								

Minnesota-specific green building certification program for new homes and remodeled homes

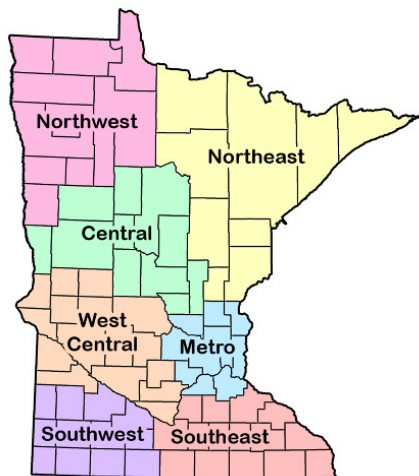
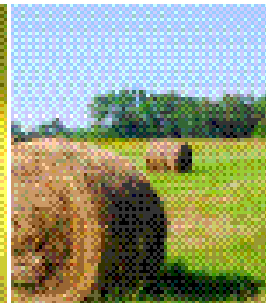


**Green Institute**  
Sustaining the environment and our communities through practical innovation

**Metro CERTs Network**

**Green Institute**

# Coordinate Metro Clean Energy Resource Teams Network



*to help connect, provide support for, and increase the effectiveness of local efforts to implement community-scale energy efficiency and clean energy projects*

**Metro CERTs Network**

**Green Institute**

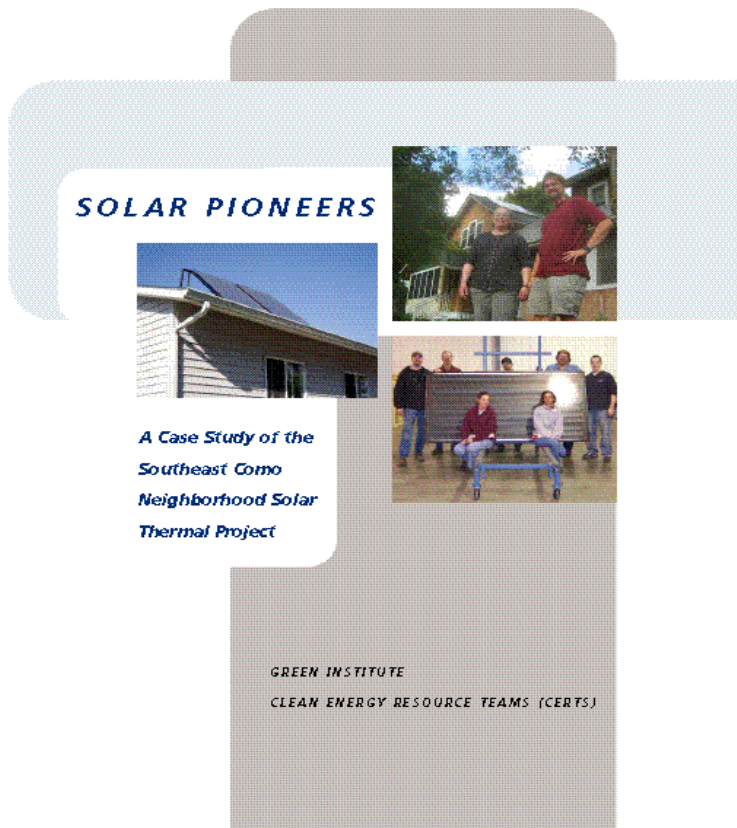
# Metro CERTs Goals

- Create a network to support and encourage collaboration among Twin Cities community-based energy projects and planning efforts
- Provide organizing support to help local efforts get off the ground
- Connect local efforts with technical resources
- Help the State of Minnesota achieve its energy efficiency and renewable energy goals

# Many existing efforts in Twin Cities...

- Neighborhood Solar Project (SE Como)
- Mahtomedi Area Green Initiative (MAGI)
- Linden Hills Power & Light
- Phillips Community Energy Co-op
- Edina Energy and Environment Comm.
- University United
- Macalester Eco House
- Other neighborhood efforts

# SE Como Solar Report

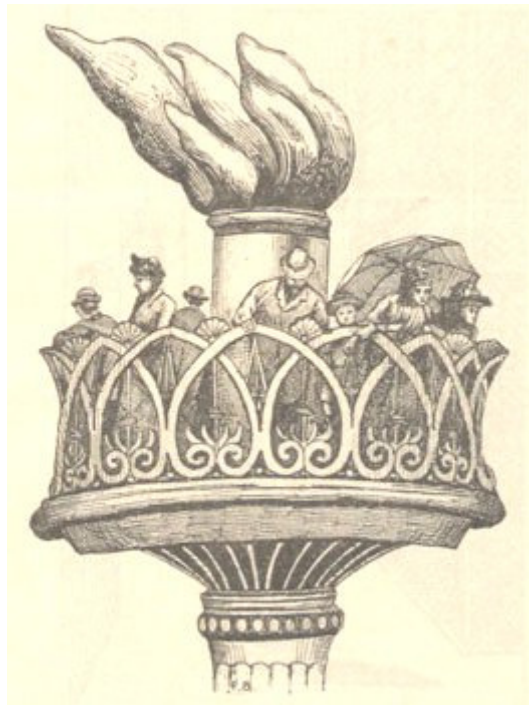


**Metro CERTs Network**



**Green Institute**

# Linden Hills Power & Light



Neighbors in Linden Hills have come together to reduce their communities carbon footprint....

Now they are  
Trash Talking!

# Phillips Community Energy Coop

- Provides energy efficiency services for low-income residents, with focus on renters



**Metro CERTs Network**



**Green Institute**

# Metro CERTs Affiliate

- **Our pledge to you**
- By becoming a CERTs Affiliate we will work to provide the resources to help you develop successful projects:
  - Assistance with project templates, project analysis and selection
  - Connection to resources (technical, organizing, and funding)
  - Help measuring the success of your project
  - Help in getting the most bang out of your energy dollars

# Metro CERTs Affiliate

- **Your commitment to the Network**

- Have a desire to work on local clean energy efforts, with a bias toward action, in the Twin Cities region
- Share the common goals of working to reduce energy use and increase renewable energy
- Agree to work cooperatively with Metro CERTs and other Affiliate groups towards our common goals
- Be willing to be a mentor community to other communities that share our goals
- Agree to seek out projects that get the most bang for the energy dollar



# Thank you !

Enjoy the rest of your evening networking!

Please take the short survey

Diana McKeown

[dmckeown@greeninstitute.org](mailto:dmckeown@greeninstitute.org)

[www.cleanenergyresourceteams.org](http://www.cleanenergyresourceteams.org)

**Metro CERTs Network**

**Green Institute**