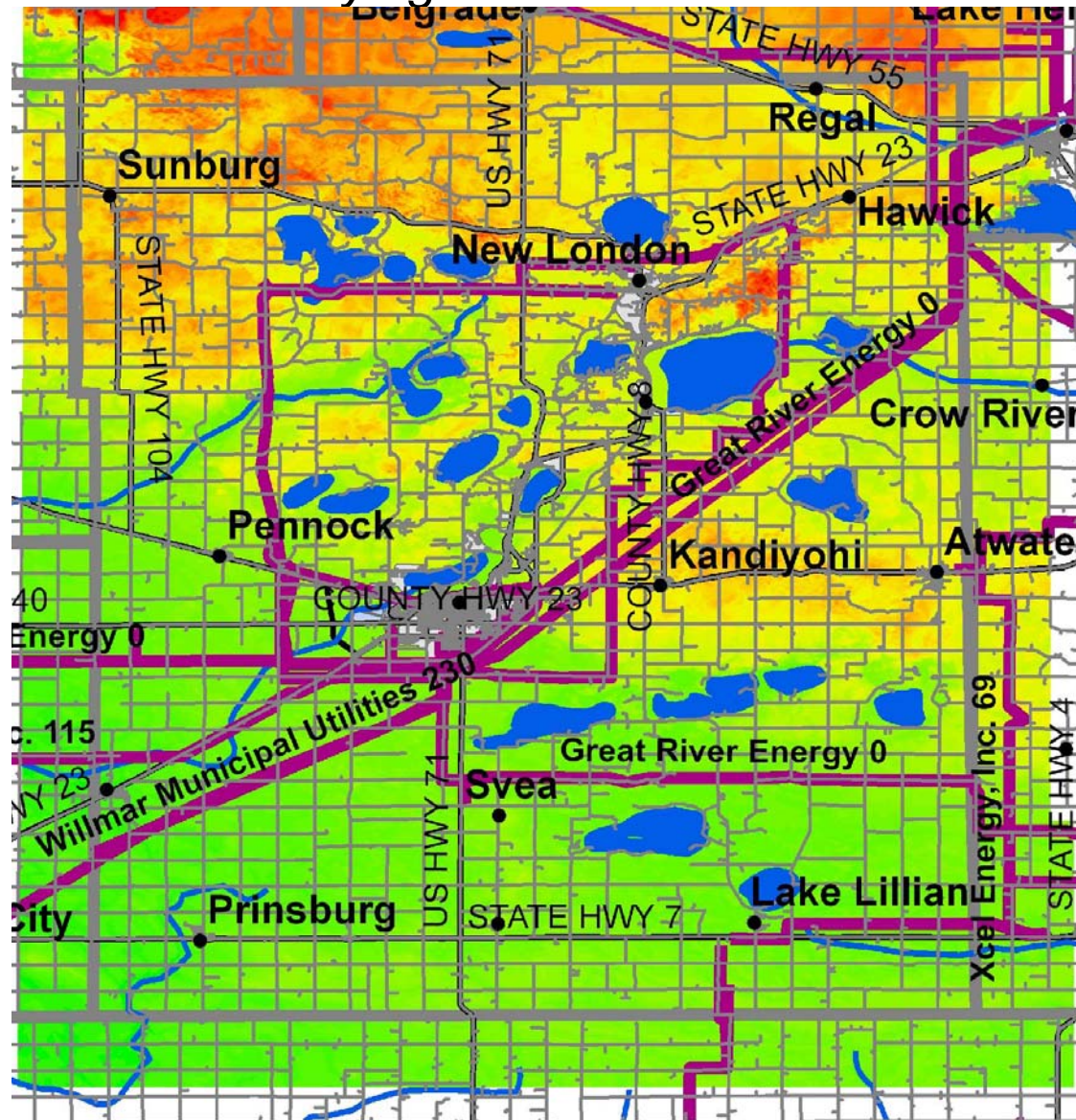


Kandiyohi County Topography

Farming the Wind: Identifying "Best Bet" Locations for Wind Turbines



Legend	
Elevation (ft.)	
■	1047 - 1137
■	1138 - 1183
■	1184 - 1223
■	1224 - 1269
■	1270 - 1404

USDA  **Agricultural Research Service**
North Central Soil Conservation Research Laboratory
 Morris, MN

- Rules of Thumb for "Best-Bet" Locations**
- High elevation
 - Relatively unobstructed fetch conditions
 - Close proximity to existing transmission lines and substations to facilitate connection to grid OR proximity to large existing load
 - Existing transmission lines have capacity for additional power

Location of electrical transmission lines > 60 KVA provided by Land Management Information Center, St. Paul, MN.



MN Clean Energy Resource Teams