



BEMIDJI

STATE UNIVERSITY



A member of the Minnesota State Colleges and Universities system, Bemidji State University is an affirmative action, equal opportunity employer and educator.

Energized for Efficiency

Erika Bailey-Johnson, Alex Miller,
Ashley Phoenix, & Dylan Sievers



BEMIDJI
STATE UNIVERSITY



A member of the Minnesota State Colleges and Universities system, Bemidji State University is an affirmative action, equal opportunity employer and educator.

Bemidji State University



Signature Themes:
Environmental Stewardship
Civic Engagement
Multicultural Understanding



Our Mission:

“Promote awareness and instill passion for the Earth through research, projects, and leadership.”

Our Vision:

“Exemplify and create a culture that can exist indefinitely while in harmony with nature.”



Leading the way...

- Talloires Declaration Signatory (2006)
- Environmental Protection Agency Green Power Partner
- American College and University Presidents Climate Commitment Signatory (2008)
- Minnesota Campus Energy Challenge 1st place (2009, 2010)
- Named one of the top eco-friendly campuses in the nation by the U.S. Green Building Council and The Princeton Review (2011, 2012)
- Students for the Environment



Green Fee

- Started in 2008
- \$5 per student per semester
- Initially, funded 50% of the Sustainability Coordinator position
- Funds projects in the Sustainability Office
- Green Fee Mini Grants

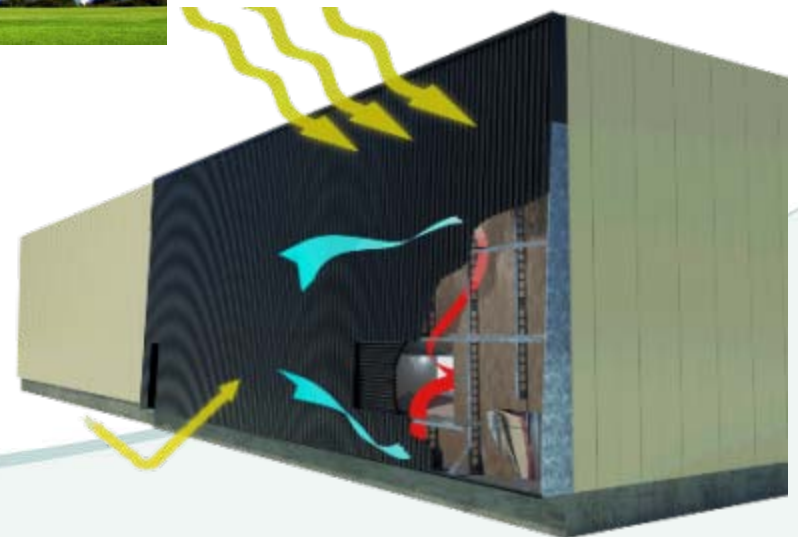
Environmental Advisory Committee (EAC)

- Made up of students, faculty and staff
- Created in 1992
- Advises the administration



Sustainability Across the Curriculum

- Real life examples.
- Provide students with connection.
- Promote awareness.
- Mix of positive and negative.



Solar Transpired Air

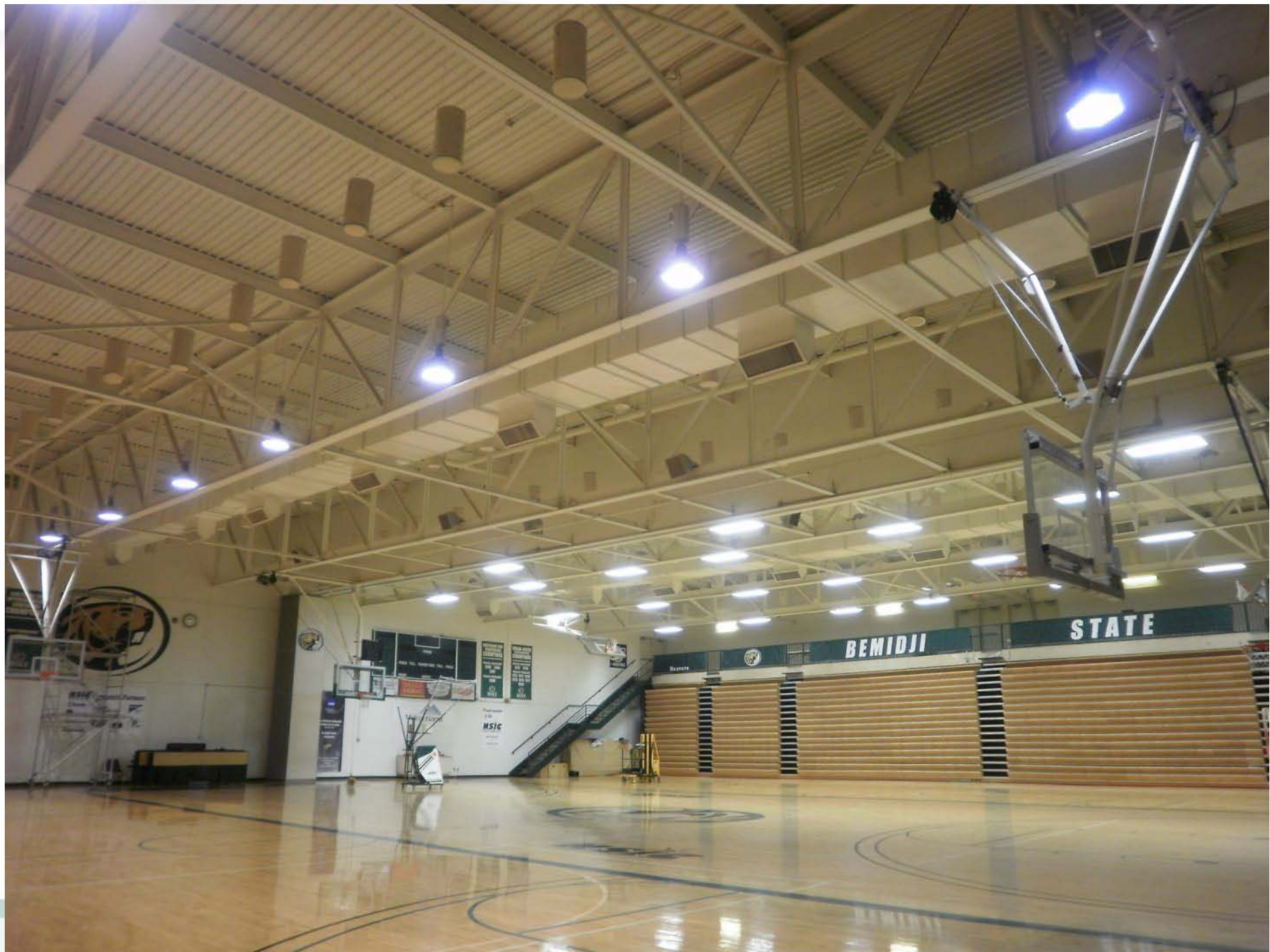
- Preheat incoming air, reducing fuel use.
 - Up to 20 degrees.
 - Passive cooling in Summer.
- BSU- Hobson Lower Union, annual estimates
 - Delivered energy: 129.0 mmBtu
 - Heat recaptured: 54.7 mmBtu
 - Carbon savings: 10.7 tons CO₂, 2.0 cars not used
 - ROI: 12.2 years
 - Slated for installation Spring 2013.



Lighting Retrofits

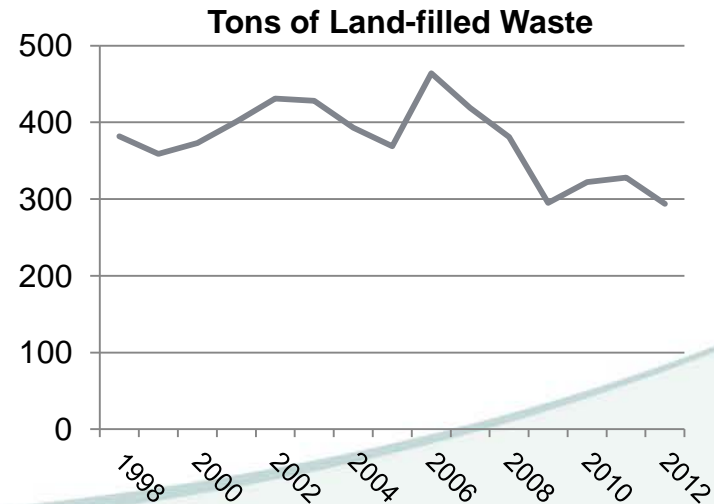
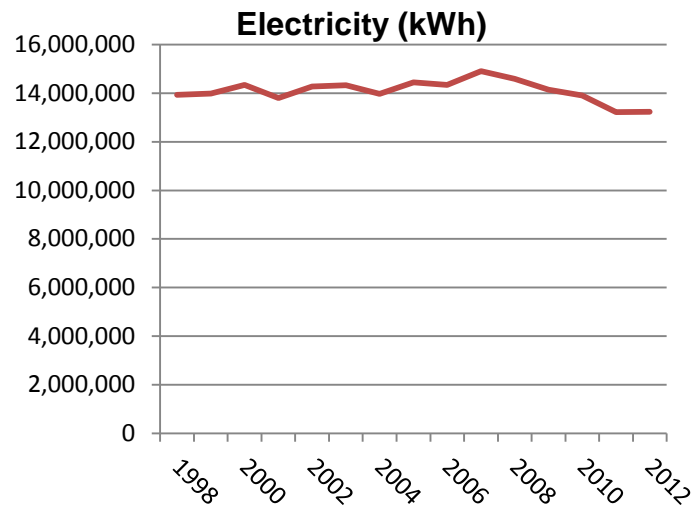
- Field House
 - 45 fixtures
 - Replaced metal halide fixtures with T5 fluorescent
 - Reduced total wattage by 22,320 W
- Lecture Hall in Sattgast Science Building
 - Reduced wattage from 7440 W to 470.5 W





Carbon Footprint

- Annual GHG emissions inventories
- Annual tracking and progress reports
- Carbon reductions and target goals will progress BSU towards becoming a more sustainable institution



Projects Related to Energy Efficiency

- Schools Cutting Carbon
- Biomass
- Real-time Energy Dashboards
- Cold Tub
- ReRev
- Bus Stop Shelters
- Vending Misers
- Power strips
- Campus Conservation Nationals & Do It In the Dark
- Bucky's Bikes
- Zip Cars
- Motion Sensors
- New Boiler
- Native Landscaping
- Laurel House



Take home message

- Lead by example, take risks
- Take time to build relationships
- Educate by visibility
- Use coursework to do work
- Instill a sense of hope
- Have fun



Contact Us

- Erika Bailey-Johnson
ebaileyjohnson@bemidjistate.edu 218-755-2560
- Ashley Phoenix
ashleyphoenix8@gmail.com
- Alex Miller
alexandra.miller2@live.bemidjistate.edu
- Dylan Sievers
dylan.sievers@live.bemidjistate.edu

“I realized that if I had to choose, I would rather have birds than airplanes.”

-Charles Lindbergh





BEMIDJI

STATE UNIVERSITY



A member of the Minnesota State Colleges and Universities system, Bemidji State University is an affirmative action, equal opportunity employer and educator.